

MARINER SANDS  
PLAT NO. 1  
P. B. 6, PG. 47

# PLAT II OF MARINER VILLAGE SQUARE P U D

IN PART OF SECTION 31 TWP 38S RGE 42E  
MARTIN COUNTY FLORIDA

CUNNINGHAM & DURRANCE  
CONSULTING ENGINEERS, INC.  
WEST PALM BEACH, FLORIDA  
APRIL 1990

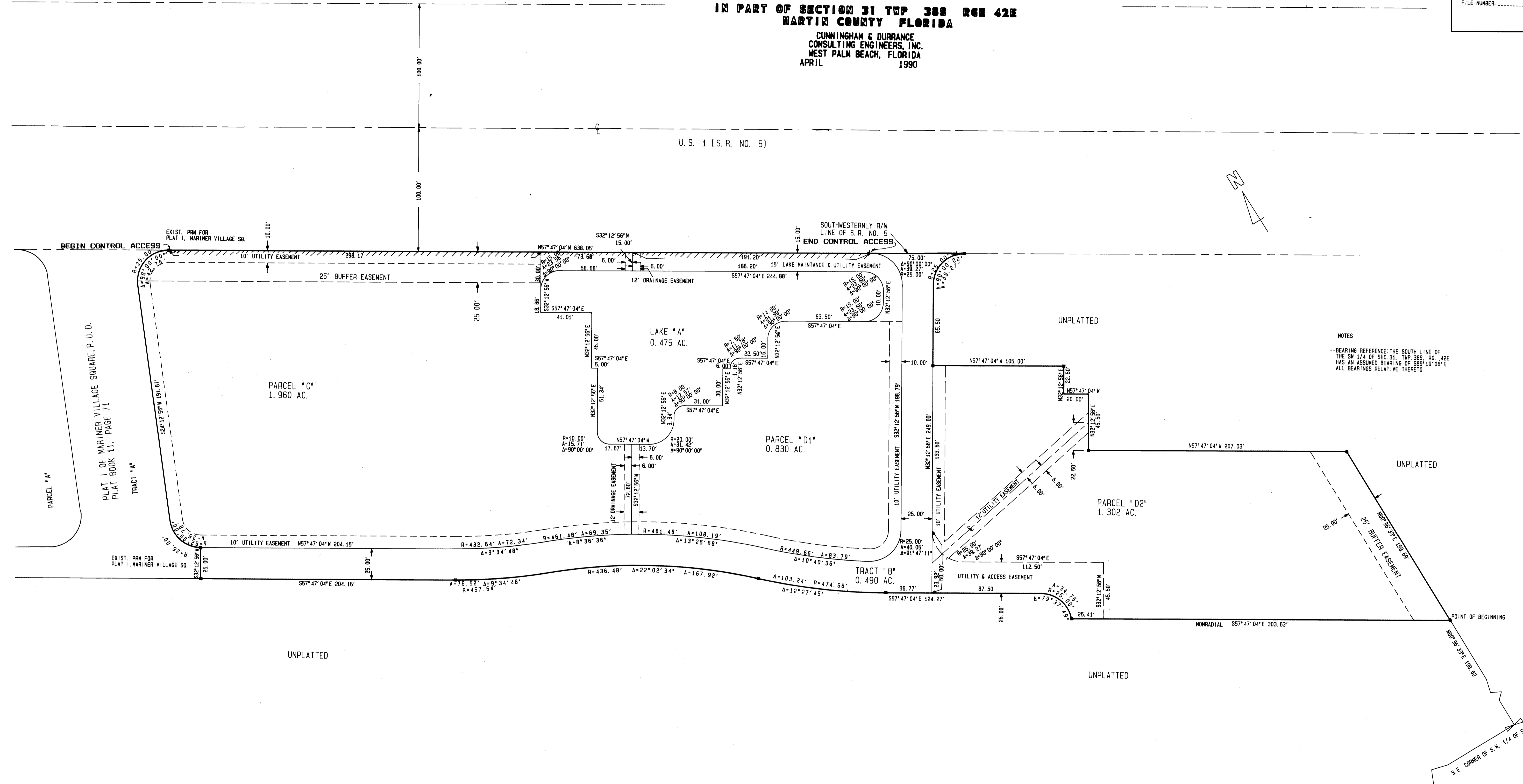
STATE OF FLORIDA  
COUNTY OF MARTIN

I, MARSHA STILLER, CLERK OF THE CIRCUIT COURT OF MARTIN COUNTY, FLORIDA HEREBY CERTIFY THAT THIS PLAT HAS FILED FOR RECORD IN PLAT BOOK 12, PAGE 48, MARTIN COUNTY, FLORIDA PUBLIC RECORDS THIS 19 DAY OF APRIL 1990.

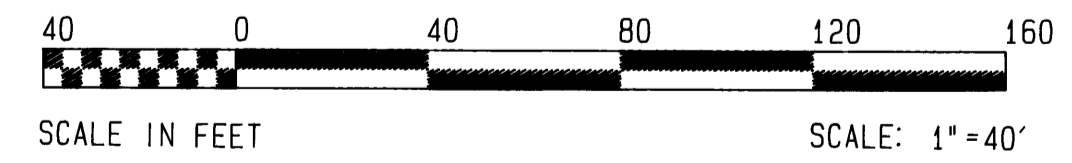
MARSHA STILLER, CLERK  
CIRCUIT COURT  
MARTIN COUNTY, FLORIDA

BY: \_\_\_\_\_  
DEPUTY CLERK

FILE NUMBER: \_\_\_\_\_



NOTES  
--BEARING REFERENCE: THE SOUTH LINE OF THE SW 1/4 OF SEC. 31, TWP. 38S, RGE. 42E HAS AN ASSUMED BEARING OF S89°19'06"E ALL BEARINGS RELATIVE THERETO



SOUTH LINE OF THE S.W. 1/4 OF SEC. 31, TWP. 38S, RGE. 42E (ASSUMED)  
P.O.C. - S.W. COR. SEC. 31, TWP. 38S, RGE. 42E